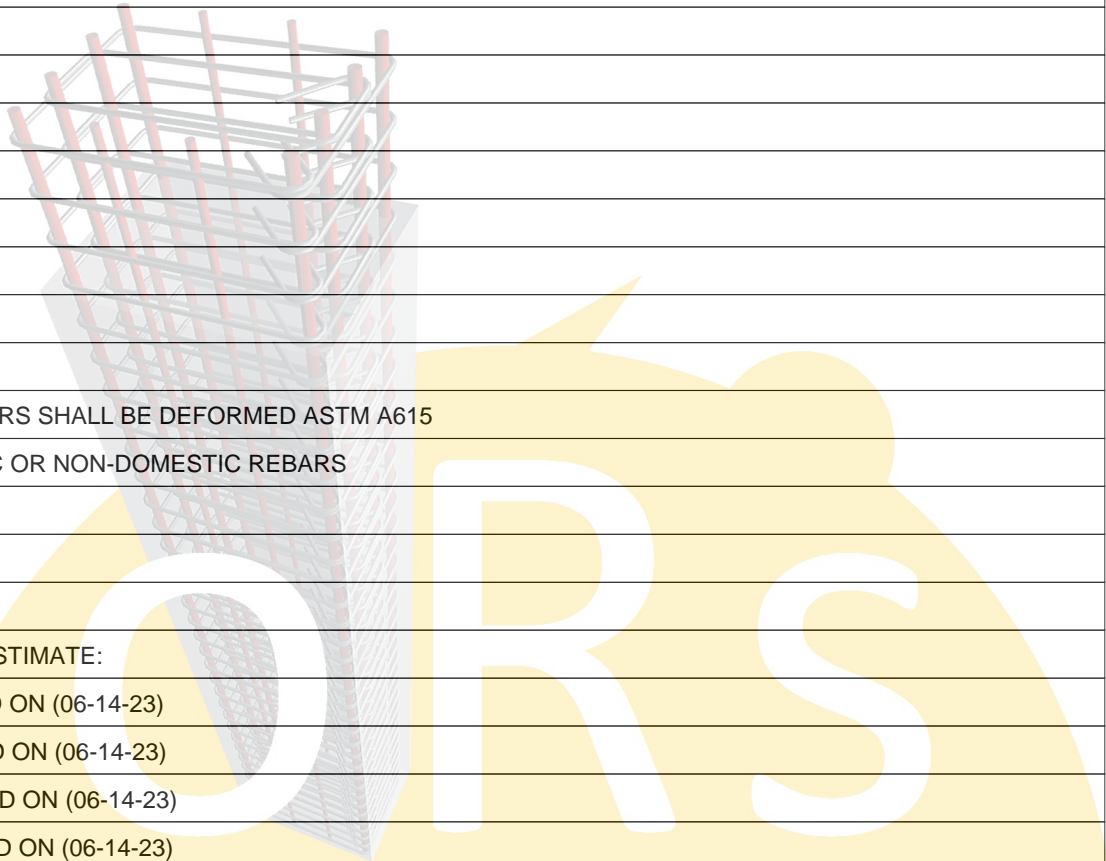


Bid Date -

**** ESTIMATING BAR LIST ****

LINE	LA	EP	A/D	STRUCTURE	MULT	REQ	CODE	+	X	QTY	SZ/GR	LENGTH	B	COMMENT	LINE LB
1				CONCRETE											
2															
3				RENAISSANCE RTP											
4				-											
5															
6				ARCHITECT: -											
7				PHONE :-											
8				FAX :-											
9															
10				STRUCTURE: -											
11				PHONE :-											
12				FAX :-											
13															
14				REBAR:											
15				1.ALL REINFORCING BARS SHALL BE DEFORMED ASTM A615											
16				GRADE A60 DOMESTIC OR NON-DOMESTIC REBARS											
17															
18				ADDENDUMS: NONE											
19															
20				DRAWING USED FOR ESTIMATE:											
21				1.A0.00 TO A7.08 DATED ON (06-14-23)											
22				2.C0.00 TO C8.01 DATED ON (06-14-23)											
23				3.E0.00 TO E10.02 DATED ON (06-14-23)											
24				4.L1.01 TO LT7.01 DATED ON (06-14-23)											
25				5.S0.01 TO S6.12 DATED ON (06-14-23)											
26															
27				EXCLUSIONS:											
28				1.REBAR WELDED TO STRUCTURAL STEEL											
29				2.ALL SMOOTH DOWELS											
30				3.CONCRETE COLUMN (NO REINF.DETAILS)											
31				4.CONCRETE SHEAR WALL (NO REINF.DETAILS)											



Bid Date -

** ESTIMATING BAR LIST **

LINE	LA	EP	A/D	STRUCTURE	MULT	REQ	CODE	+	X	QTY	SZ/GR	LENGTH	B	COMMENT	LINE LB
32				5.CMU WALL (NO REINF.DETAILS)											
33				6.CONCRETE BEAM (NO REINF.DETAILS)											
34				7.ALL UPPER LEVEL SLABS (NOT ENOUGH INFORMATION)											
35				LEVEL-2 TO ROOF											
36				8.REF. SHEETS(S5.31 & S5.32, S6.11 & S6.12)											
37				9.SITWORK (NOT ENOUGH INFORMATION)											
38															
39				INCLUSIONS:											
40				1.DRILLED PIER											
41				2.CONTINUES FOOTING											
42				3.SLAB ON GRADE											
43				4.UPPER LEVEL											
44															
45				ASSUMPTIONS:											
46				1.WE ASSUMED 15% MORE AREA FOR MESH LAPPING.											
47				2.WE ASSUMED ALL DRILLED PIER DEPTH AS											
48				6D+6" REFER SHEET -(1/S5.01).											
49				3.WE ASSUMED CONTINUES FOOTING MARK = WF-3											
50				REINF.AS 3-#5 CONT & #5 @12" TRANS.											
51															
52				NOTES:											
53				1.REBAR ACCESSORIES: AS PER STANDARD PRACTICE											
54															
55				DRILLED PIER											
56				REF.- S5.01 & S2.01											
57				MARK = DS-3 (27 -LOC)(H= VARIES)											
58										27	17 #7	18-06		17-#7 VERT	17357
59										27	1 #4	85-00	L	#4 @12" SPIRAL TIES	1533
60										27	1 #4	349-00	L	#4 @3" SPIRAL TIES	6295
61				MARK = DS-4 (44 -LOC)(H= VARIES)											
62										44	24 #8	24-06		24-#8 VERT	69078

Bid Date -

**** ESTIMATING BAR LIST ****

LINE	LA	EP	A/D	STRUCTURE	MULT	REQ	CODE	+	X	QTY	SZ/GR	LENGTH	B	COMMENT	LINE LB
63									44	1	#4	151-00	L	#4 @12" SPIRAL TIES	4438
64									44	1	#4	616-00	L	#4 @3" SPIRAL TIES	18105
65 MARK = DS-5 (17 -LOC)(H= VARIES)															
66									17	30	#9	30-06		30-#9 VERT	52887
67									17	1	#4	236-00	L	#4 @12" SPIRAL TIES	2680
68									17	1	#4	959-00	L	#4 @3" SPIRAL TIES	10890
69 MARK = DS-5U (7 -LOC)(H= VARIES)															
70									7	30	#9	30-06		30-#9 VERT	21777
71									7	1	#4	236-00	L	#4 @12" SPIRAL TIES	1104
72									7	1	#4	959-00	L	#4 @3" SPIRAL TIES	4484
73 MARK = DS-6 (2 -LOC)(H= VARIES)															
74									2	36	#10	36-06		36-#10 VERT	11308
75									2	1	#4	340-00	L	#4 @12" SPIRAL TIES	454
76									2	1	#4	1377-00	L	#4 @3" SPIRAL TIES	1840
77 MARK = DS-6U (14 -LOC)(H= VARIES)															
78									14	36	#10	36-06		36-#10 VERT	79158
79									14	1	#4	340-00	L	#4 @12" SPIRAL TIES	3180
80									14	1	#4	1377-00	L	#4 @3" SPIRAL TIES	12878
81															
82				CONT.FTG										CONTINUES FOOTING	
83 MARK = WF-A															
84 REF.-(S5.01 & S2.01)(912 -LFT)															
85									28	3	#5	40-00		3-#5 CONT	3504
86										915	#5	2-00		#5 @12" TRANS	1909
87									24	3	#5	6-00	H	3-#5 CONT COR	451
88 MARK = WF-3															
89 REF.-(S5.01 & S2.01)(222 -LFT)															
90									7	3	#5	40-00		3-#5 CONT	876
91										225	#5	2-00		#5 @12" TRANS	469
92									6	3	#5	6-00	H	3-#5 CONT COR	113
93															

Bid Date -

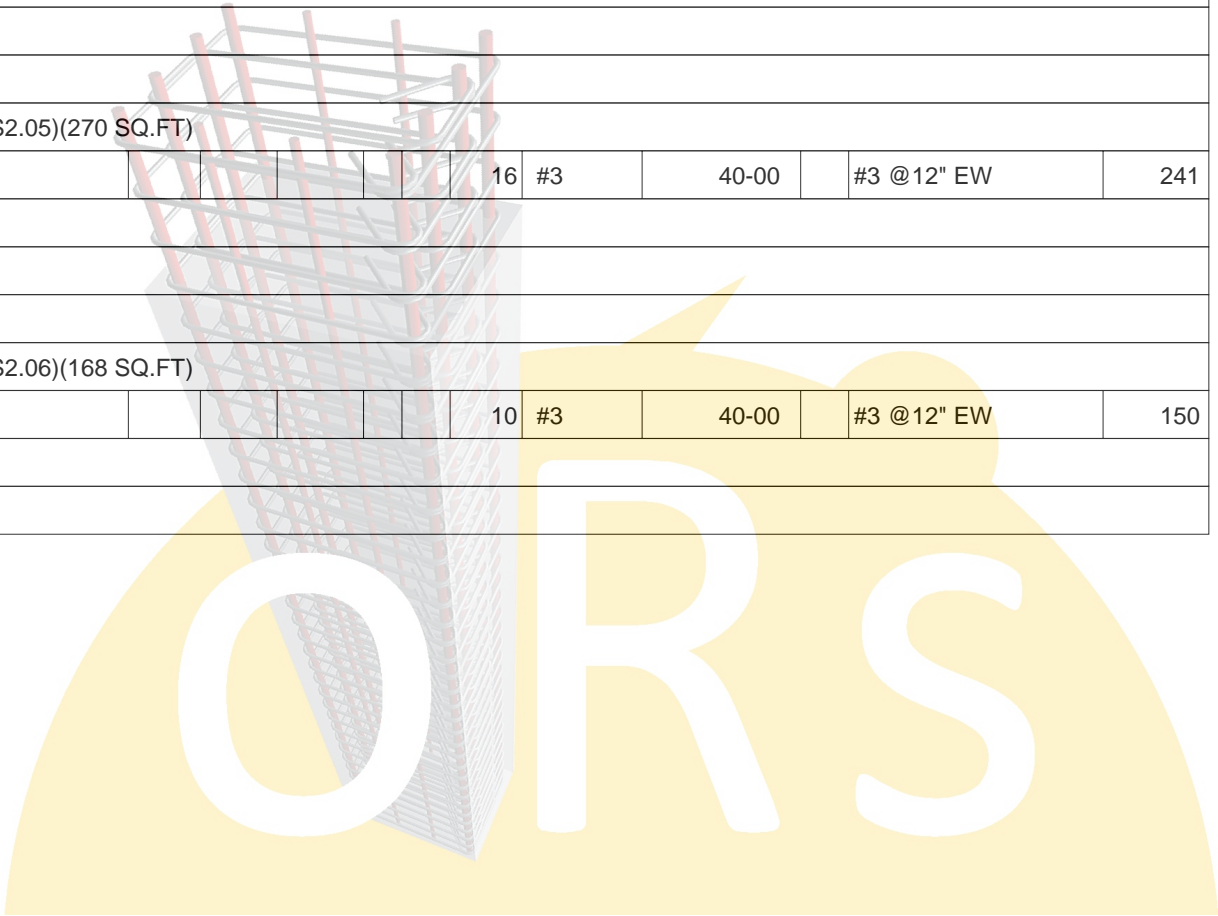
**** ESTIMATING BAR LIST ****

LINE	LA	EP	A/D	STRUCTURE	MULT	REQ	CODE	+	X	QTY	SZ/GR	LENGTH	B	COMMENT	LINE LB
94				SOG										SLAB ON GRADE	
95				6" THICK SLAB											
96				REF.-(S5.01 & S2.01)(39125 SQ.FT)											
97										1590	#4	40-00		#4 @16" EW	42485
98				8" THICK SLAB											
99				REF.-(S5.01 & S2.01)(3605 SQ.FT)											
100										135	#5	40-00		#5 @18" EW	5632
101				REF.-(1/S5.41 & S2.01)(464 LFT)											
102										350	#4	3-06	L	#4 @16" DWL	818
103										350	#4	5-02	L	#4 @16" DWL TOP	1208
104									13	4	#4	40-00		#4 @16" HOR	1389
105									24	4	#4	4-10	H	#4 @16" COR	310
106				CONCRETE STAIR											
107				REF.-(S5.01 & S2.01)(75 SQ.FT)											
108										5	#4	40-00		#4 @16" EW	134
109										10	#4	3-00	L	#4 @16" DWL	20
110									8	1	#4	10-00		1-#4 NOSING	53
111															
112				UPPER LEVEL										UPPER LEVEL	
113				LEVEL 2											
114				6" THICK SLAB											
115				REF.-(S5.01 & S2.02)(1565 SQ.FT)											
116										65	#4	40-00		#4 @16" EW	1737
117				MARK = D1 & D2											
118				REF.-(S6.11 & S2.02)(855 SQ.FT)											
119										48	#3	40-00		#3 @12" EW	722
120															
121				LEVEL 3											
122				MARK = D1											
123				REF.-(S6.11 & S2.03)(270 SQ.FT)											
124										16	#3	40-00		#3 @12" EW	241

Bid Date -

** ESTIMATING BAR LIST **

LINE	LA	EP	A/D	STRUCTURE	MULT	REQ	CODE	+	X	QTY	SZ/GR	LENGTH	B	COMMENT	LINE LB
125															
126				LEVEL 4											
127				MARK = D1											
128				REF.-(S6.11 & S2.04)(270 SQ.FT)											
129										16	#3	40-00		#3 @12" EW	241
130															
131				LEVEL 5											
132				MARK = D1											
133				REF.-(S6.11 & S2.05)(270 SQ.FT)											
134										16	#3	40-00		#3 @12" EW	241
135															
136				LEVEL 6											
137				MARK = D1											
138				REF.-(S6.11 & S2.06)(168 SQ.FT)											
139										10	#3	40-00		#3 @12" EW	150
140															
141															



Bid Date -

**** TOTALS PAGE (LBS) ****

DRILLED PIER SIZE	STRUCTURE TOTAL %	Weight	STRAIGHT %	Weight	LIGHT BENT %	Weight	HEAVY BENT %	Weight	STOCK/MILL %	Weight
#4 Gr 60	100	67,881			100	67,881				
#7 Gr 60	100	17,357	100	17,357						
#8 Gr 60	100	69,078	100	69,078						
#9 Gr 60	100	74,664	100	74,664						
#10 Gr 60	100	90,466	100	90,466						
Average Lbs per Linear Feet = 1.7850					Average Rebar Size = 7.90					
Total 159.8 Tons	100	319,446	79	251,565	21	67,881				

CONT.FTG SIZE	STRUCTURE TOTAL %	Weight	STRAIGHT %	Weight	LIGHT BENT %	Weight	HEAVY BENT %	Weight	STOCK/MILL %	Weight
#5 Gr 60	100	7,322	92	6,758			8	564		
Average Lbs per Linear Feet = 1.0430					Average Rebar Size = 5.00					
Total 3.7 Tons	100	7,322	92	6,758			8	564		

SOG SIZE	STRUCTURE TOTAL %	Weight	STRAIGHT %	Weight	LIGHT BENT %	Weight	HEAVY BENT %	Weight	STOCK/MILL %	Weight
#4 Gr 60	100	46,417		53	4	2,046	1	310	95	44,008
#5 Gr 60	100	5,632	100	5,632						
Average Lbs per Linear Feet = .6950					Average Rebar Size = 4.11					
Total 26.1 Tons	100	52,049	11	5,685	4	2,046	1	310	85	44,008

Bid Date -

**** TOTALS PAGE (LBS) ****

UPPER LEVEL	STRUCTURE TOTAL	STRAIGHT	LIGHT BENT	HEAVY BENT	STOCK/MILL	
SIZE	%	Weight	%	Weight	%	Weight
#3 Gr 60	100	1,595			100	1,595
#4 Gr 60	100	1,737			100	1,737
		Average Lbs per Linear Feet = .4870			Average Rebar Size = 3.52	
Total 1.7 Tons	100	3,332			100	3,332

GRAND TOTALS	TOTAL	STRAIGHT	LIGHT BENT	HEAVY BENT	STOCK/MILL	
SIZE	%	Weight	%	Weight	%	Weight
#3 Gr 60	100	1,595			100	1,595
#4 Gr 60	100	116,035	53	60	310	45,745
#5 Gr 60	100	12,954	96		4	564
#7 Gr 60	100	17,357	100			
#8 Gr 60	100	69,078	100			
#9 Gr 60	100	74,664	100			
#10 Gr 60	100	90,466	100			
		Average Lbs per Linear Feet = 1.4274			Average Rebar Size = 7.29	
Total 191.1 Tons	100	382,149	69	18	874	47,340

